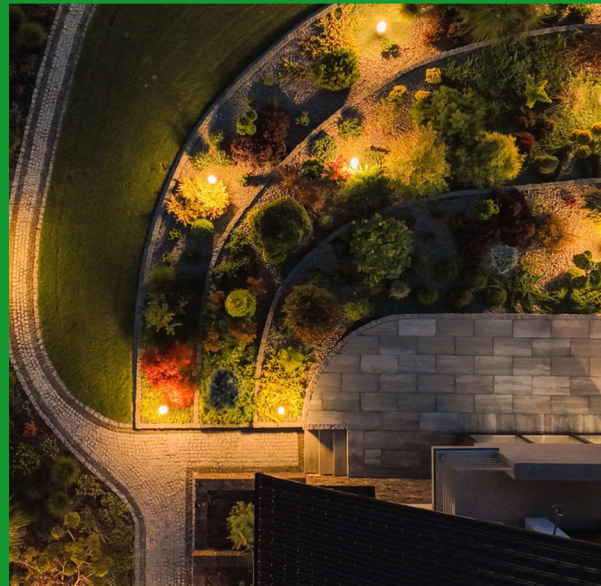




Landscape Plus

ALL INCLUSIVE RESIDENTIAL PROPERTY MAINTENANCE

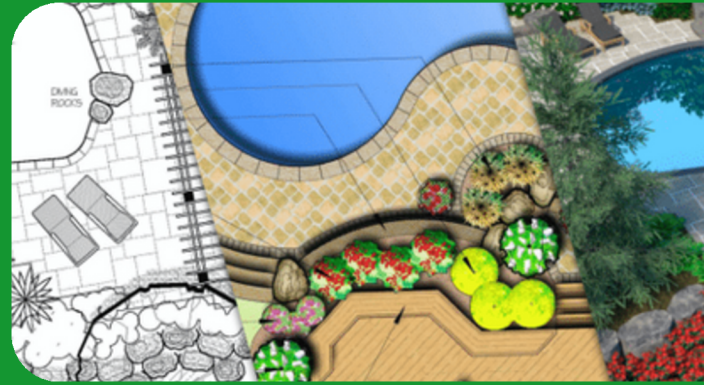




OUR RESIDENTIAL SERVICES

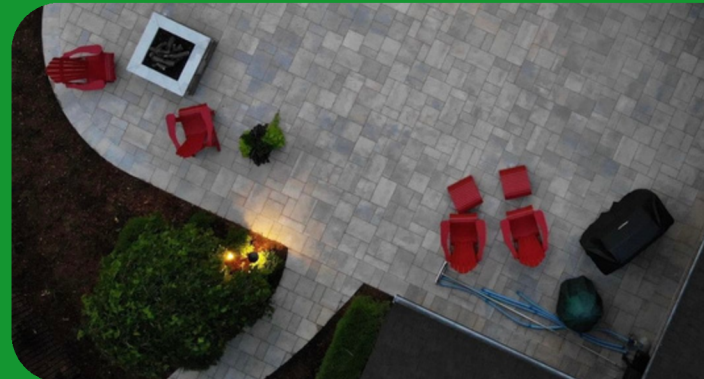
✓ DESIGN

From budget-friendly solutions to luxurious designs, we cater to your unique vision.



✓ BUILD

From enhanced curb-appeal to backyard retreats, you dream it- we build it.



✓ MAINTAIN

Precision lawn mowing to expert top dressing, seasonal clean-ups, water feature care, and more



...Let us take care of everything



LANDSCAPE PLUS, HAS GONE GREEN!

At Landscape Plus, we're thrilled to unveil our latest endeavor in sustainable practices: an all-green, electric equipment team! As leaders in the landscaping industry, we understand the vital role we play in preserving the environment while maintaining beautiful outdoor spaces. With this innovative initiative, we're taking a giant leap towards a greener, cleaner future.



Why are we so excited about our all-green team? Let us tell you:

1. Commitment to Sustainability:

Our decision to transition to electric equipment is rooted in our unwavering dedication to environmental stewardship. By minimizing our carbon footprint and reducing emissions, we're actively contributing to a healthier planet for generations to come.

2. Cutting-Edge Technology:

Embracing electric-powered tools doesn't mean compromising on performance. In fact, our state-of-the-art equipment boasts cutting-edge technology that rivals traditional gas-powered alternatives. From lawn mowers to trimmers, each tool is meticulously selected for its efficiency and eco-friendliness.

3. Quiet Operation:

Bid farewell to noisy landscaping operations! With our electric equipment, you'll enjoy a serene outdoor environment without the disruptive sounds of gas-powered machinery. Whether you're working, relaxing, or hosting an event, our quiet operation ensures minimal disturbance.

4. Enhanced Safety:

Safety is paramount in everything we do. By utilizing electric equipment, we're mitigating the risks associated with combustible fuels, such as accidental fires and harmful emissions. This not only protects our team members but also safeguards your property and the surrounding environment.

Contact us today to learn more about our eco-friendly services and how we can help bring your outdoor spaces to life, sustainably!



COMPANY PROFILE

ABOUT US

Established in 1998, Landscape Plus has grown from a small landscaping crew to a full-service company in Guelph and KW area. Committed to professionalism, family values, and environmental stewardship, we specialize in landscape, hardscape, property maintenance, and snow removal. With a focus on sustainability, we lead in green initiatives, using Battery-powered equipment to minimize our carbon footprint. Our experienced team is dedicated to bringing your outdoor goals with integrity and personalized service.

OUR MISSION

to build and maintain landscapes that encourage our clients to enjoy outdoor living

OUR VALUES

- P**rofessionalism the best equipment, facility, people, and product
- R**espect to every team member, clients, and their properties
- I**ntegrity make a promise and deliver on it... every time!
- D**edication doing whatever it takes to get the job done
- E**xcellence being the very best in everything we do and learning from the best



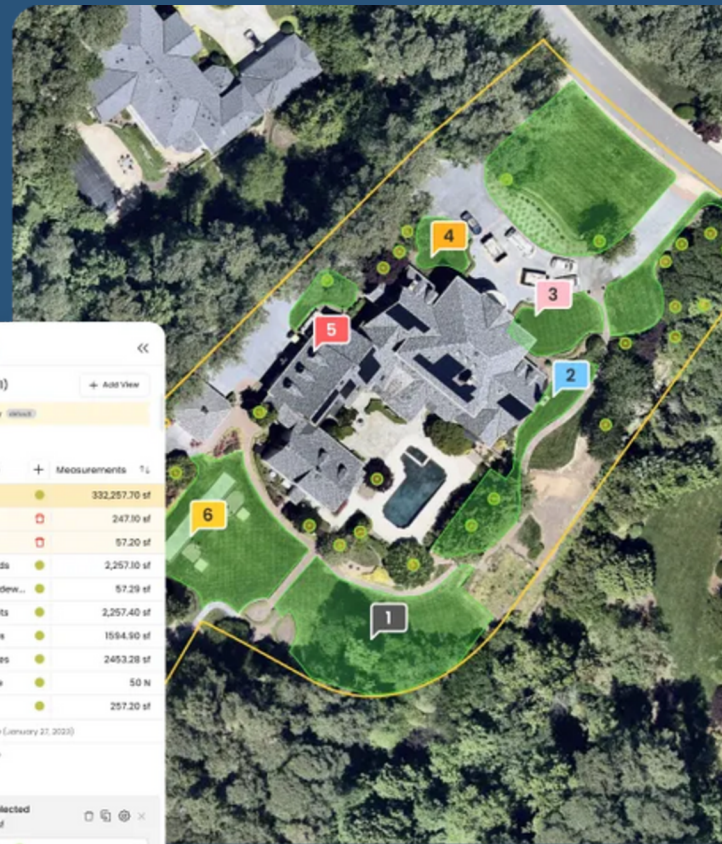
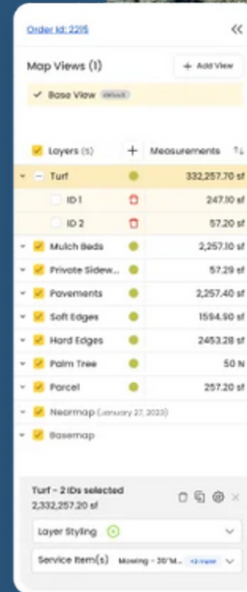
LP SITE RECON

Every Detail of Your Property, Carefully Tracked

We understand that your residential home is more than just a property—it's your sanctuary, a reflection of your lifestyle and aspirations. Utilizing state-of-the-art technology, we ensure that every inch of your residence receives the meticulous care and precision it deserves.

Image Documentation:

In addition to tracking tasks and flagging issues, our software allows us to keep a visual record of your property's condition. We capture and store images of key areas, providing a clear and comprehensive overview of the maintenance activities and improvements made over time.

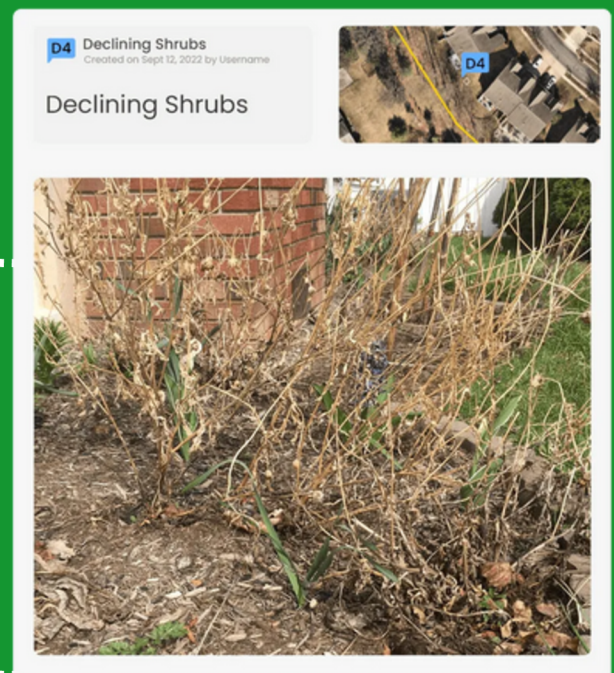


Task Assignment and Tracking:

We can seamlessly assign tasks to our dedicated team members and track their progress in real-time. Whether it's scheduling routine maintenance or addressing specific issues, our system ensures that every task is completed efficiently and effectively.

Flagging Potential Issues:

Whether it's a tree in need of pruning or a drainage problem requiring attention, we proactively identify and address issues to maintain the integrity and aesthetics of your property.



ABOUT YOUR PROPERTY

We have meticulously mapped and cataloged every detail of your property. From boundary lines to landscaping features, we will show you how our services will enhance your stunning property.



THANK YOU FOR YOUR CONSIDERATION

We appreciate the opportunity to share how we can support your needs and enhance your property management experience.

Get Back to Enjoying Outdoor Living!

Should you have any further questions or require additional information, please don't hesitate to reach out.

We look forward to the possibility of working together to achieve your landscaping goals.



📍 5865 Line 86 Ariss, ON

🖱️ enjoyoutdoorliving.ca

☎️ 519-576-1414