



**Landscape Plus**

**ALL INCLUSIVE PROPERTY MAINTENANCE**





# OUR COMMERCIAL SERVICES

---



## ✓ MAINTENANCE

- Lawn mowing
  - Seasonal clean-ups
  - Garden Maintenance
  - Aeration
  - Top dressing and Over-seeding
  - Mulching
  - Emergency Services (Post-storm clean-up)
- 



## ✓ SNOW REMOVAL

- 24/7 service
  - Salting, de-icing, snow relocation, & removal
  - E-mail updates before and during snow events
- 



## ✓ EXTRAS

- Seasonal Planters
- Water Feature Maintenance
- Landscape Design
- New Garden Installation
- and much more!



## LANDSCAPE PLUS, HAS GONE GREEN!

At Landscape Plus, we're thrilled to unveil our latest endeavor in sustainable practices: an all-green, electric equipment team! As leaders in the landscaping industry, we understand the vital role we play in preserving the environment while maintaining beautiful outdoor spaces. With this innovative initiative, we're taking a giant leap towards a greener, cleaner future.



## Why are we so excited about our all-green team? Let us tell you:

### 1. Commitment to Sustainability:

Our decision to transition to electric equipment is rooted in our unwavering dedication to environmental stewardship. By minimizing our carbon footprint and reducing emissions, we're actively contributing to a healthier planet for generations to come.

### 2. Cutting-Edge Technology:

Embracing electric-powered tools doesn't mean compromising on performance. In fact, our state-of-the-art equipment boasts cutting-edge technology that rivals traditional gas-powered alternatives. From lawn mowers to trimmers, each tool is meticulously selected for its efficiency and eco-friendliness.

### 3. Quiet Operation:

Bid farewell to noisy landscaping operations! With our electric equipment, you'll enjoy a serene outdoor environment without the disruptive sounds of gas-powered machinery. Whether you're working, relaxing, or hosting an event, our quiet operation ensures minimal disturbance.

### 4. Enhanced Safety:

Safety is paramount in everything we do. By utilizing electric equipment, we're mitigating the risks associated with combustible fuels, such as accidental fires and harmful emissions. This not only protects our team members but also safeguards your property and the surrounding environment.

Contact us today to learn more about our eco-friendly services and how we can help bring your outdoor spaces to life, sustainably!



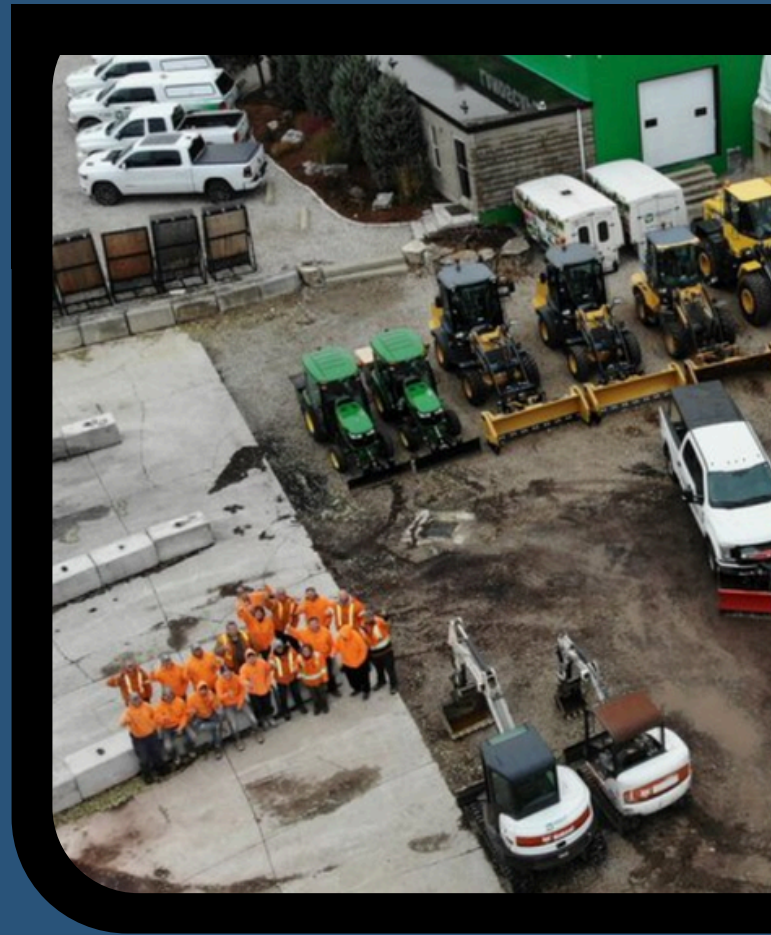
# COMPANY PROFILE

## ABOUT US

Established in 1998, Landscape Plus has grown from a small landscaping crew to a full-service company in Guelph and KW area. Committed to professionalism, family values, and environmental stewardship, we specialize in landscape, hardscape, property maintenance, and snow removal. With a focus on sustainability, we lead in green initiatives, using Battery-powered equipment to minimize our carbon footprint. Our experienced team is dedicated to bringing your outdoor goals with integrity and personalized service.

## OUR MISSION

to build and maintain landscapes that encourage our clients to enjoy outdoor living



## OUR VALUES

**P**rofessionalism -the best equipment, facility, people, and product

**R**espect -to every team member, clients, and their properties

**I**ntegrity -make a promise and deliver on it... every time!

**D**edication - doing whatever it takes to get the job done

**E**xcellence - being the very best in everything we do and learning from the best

# TRUST

## COMMUNICATION, MEANS CONFIDENCE

we understand the paramount importance of accountability and trust when it comes to managing commercial properties. We recognize that your property isn't just a physical asset, and that's why we're committed to providing comprehensive care and transparent communication to ensure your peace of mind.

### Weekly Communication:

To keep you fully informed and involved in the management process, we provide detailed weekly communications. These reports outline the services we've completed during the week, including maintenance tasks, inspections, and any other relevant activities. Additionally, we include comprehensive notes on areas that were addressed, highlighting any issues that were identified and the steps taken to resolve them.

### Future Plans and Addressing Issues:

Moreover, we proactively note any potential issues or concerns that may require our attention during our next visit.

### Monthly Meetings or Calls:

To ensure alignment with your property management goals, we schedule monthly calls with our dedicated account managers. These calls provide an opportunity to discuss any ongoing concerns, review performance metrics, and strategize for future enhancements. By keeping communication channels open, we can address any evolving needs or challenges promptly and effectively.

At Landscape Plus, we're not just managing properties; we're building long-lasting partnerships based on trust, integrity, and accountability.

### OUR WEEKLY COMMUNICATION

**LP**  
Landscape Plus

**PROPERTY MAINTENANCE**  
WEEKLY REPORT

Business Name: \_\_\_\_\_

Date: \_\_\_\_\_

THANK YOU FOR ENTRUSTING  
LANDSCAPE PLUS WITH  
YOUR PROPERTY MAINTENANCE.

Services we provided this week:

- Lawn Mowing
- Garden Weed & Cultivate
- Aeration
- Mulching
- Fertilizing
- Tree and Stump Removal
- Tree and Shrub Pruning
- Seasonal Planting
- New Garden Installation
- Top Dress and Overseeding
- Spring/Fall Clean-Up
- Other:.....

**Notes**

For questions, concerns, or to inquire about additional services, contact us today at 519.576.1414

## A few of our commercial clients:



Region of Waterloo



**THANK YOU FOR TRUSTING US WITH YOUR PROPERTY  
MAINTENANCE!**

# LP SITE RECON

## Every Detail of Your Property, Carefully Tracked

We go above and beyond to ensure that every aspect of your commercial property receives meticulous attention and care. That's why we've invested in cutting-edge technology to track, monitor, and manage every inch of your property with precision.

### Image Documentation:

In addition to tracking tasks and flagging issues, our software allows us to keep a visual record of your property's condition. We capture and store images of key areas, providing a clear and comprehensive overview of the maintenance activities and improvements made over time.



Layers (3)	Measurements	
• Turf	23,574.79 sf	Green circle
• Mulch Beds	2,463.30 sf	Red circle
• Pavements	1,119.25 sf	Blue circle
• Parcel	0.96 acres	Yellow circle
• Nearmap [September 3, 2022]		
• Basemap		

### Task Assignment and Tracking:



We can seamlessly assign tasks to our dedicated team members and track their progress in real-time. Whether it's scheduling routine maintenance or addressing specific issues, our system ensures that every task is completed efficiently and effectively.

### Flagging Potential Issues:

Whether it's a tree in need of pruning or a drainage problem requiring attention, we proactively identify and address issues to maintain the integrity and aesthetics of your property.

**D4 Declining Shrubs**  
Created on Sept 12, 2022 by Username

**Declining Shrubs**



# THANK YOU FOR YOUR CONSIDERATION

We appreciate the opportunity to share how we can support your needs and enhance your property management experience.

## Let's start today!


Should you have any further questions or require additional information, please don't hesitate to reach out.

We look forward to the possibility of working together to achieve your property management goals.



 5865 Line 86 Ariss, ON

 [enjoyoutdoorliving.ca](http://enjoyoutdoorliving.ca)

 519-576-1414